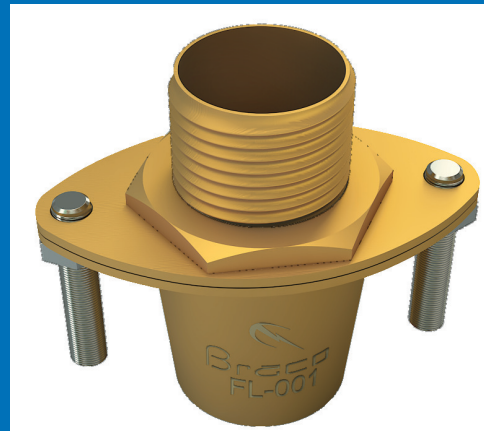


Braco Flange Type Cable Glands are made out of brass castings and are machined accurately to the required sizes. These glands are suitable for armoured cables and are called mechanical glands hence suitable for outdoor application.

The gland comprises of brass body (flange type oval shape) and plate clamped with galvanized mild steel studs and nuts for clamping the armour. Tapered cone and nut are provided for termination of cable.

The cone and body taper is designed for giving a firm grip to the armour of the cable.



### FLANGE TYPE CABLE GLANDS

Code No	E(mm)	Max Dia Of Cable	Under Armour Dia	L	Acceptance Dia	
					Min	Max
FL 5	15.0	16.5	10.0	13.0	12.0	16.5
FL 4	19.0	19.0	13.5	13.0	15.0	19.0
FL 3	19.5	20.5	13.0	13.0	18.5	20.5
FL 2	25.0	24.5	19.0	16.5	20.5	24.5
FL 1	31.0	30.0	25.5	15.5	24.0	30.0
FL 11	31.0	34.0	28.0	15.0	29.5	34.0
FL 0	37.5	35.0	29.5	21.0	32.5	35.0
FL 00	37.5	38.0	29.5	20.0	34.5	38.0
FL 38	42.0	42.0	34.5	21.5	37.0	42.0
FL 001	49.0	44.0	41.0	20.5	40.5	44.0
FL 002	53.5	52.0	46.0	21.5	43.5	52.0
FL 003	60.0	58.0	52.0	23.0	51.0	58.0
FL 0033	65.0	67.0	56.0	25.5	56.5	67.0
FL 004	75.0	76.0	65.2	22.5	66.0	76.0
FL 005	99.0	83.0	88.0	22.5	75.0	83.0

